

# My Writing Process

## Idea

**Character**

**World**

**Problem**

**Note: *B/M/E***

(Beginning/Middle/End)

**Skeletal Outline**

(Build tiny branches)

*\*see page 2*

## Develop Research

**Build World**

**Interview Characters**

**Choose Theme**

(life/social issue your character will deal with) \*Ex: lying, bullying, prejudice, etc...

**Emotional Arcs**

{inner growth of character(s)}  
\*Ex: fear, love, insecurity, responsibility, etc...)

## Write

**Chapters**

(usually 1-3 chapters to tell whether you have a story.)

**Finish 1st Draft**

**Beta/CPs**

\*special peeps read

**EDIT, EDIT,**

**EDIT**

*\*Chapter* (finalize only at end)

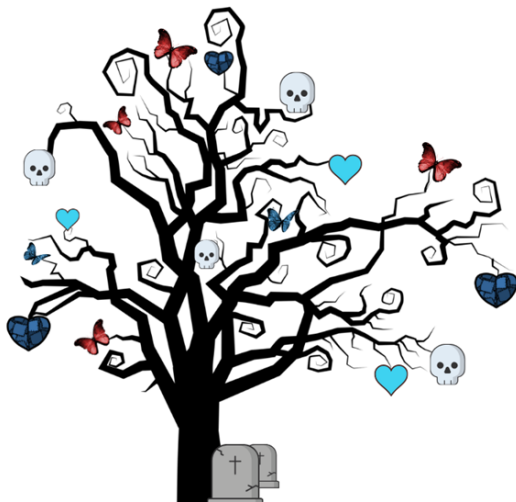
**SETTING:** (where scene takes place)

**POV:** (point-of-view; whose eyes is this scene seen through?)

**SCENE TYPE:** (Action/Reaction, Emotional/Theme Arc, Details, Backstory, Exposition, World Building, Development, etc... Choose all that apply. \*Later, can code these using colors, letters, numbers, ec...)

**SUMMARY:** (summarize scene in no more than 2 sentences.)

**\*Note:** once you're satisfied that you have all your scenes on cards, you can group the summaries together to create your synopsis.



**Example  
Of Note Card**



# My Writing Process

**Idea**

**Develop  
Research**

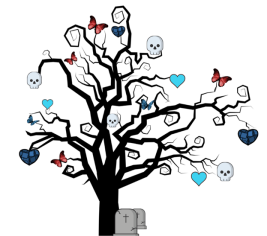
**Write**

Character— \_\_\_\_\_

World— \_\_\_\_\_

Problem— \_\_\_\_\_

**Skeletal Outline - (*jot down ideas, not complete sentences*) \*tiny branches**



**Beginning**

---

---

**Middle**

---

---

**End**

---

---